

RD-953 innerScan®

**BLUETOOTH BODY COMPOSITION MONITOR WITH
EXCLUSIVE *MULTI FREQUENCY* BIA TECHNOLOGY**



**FDA Cleared “Multi Frequency”
BIA Technology**

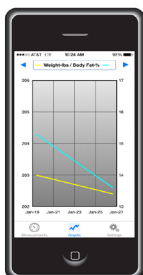
**Integrated Bluetooth 4.0 long
battery life allowing instant data
transmission to your iPhone 4S
and above or Android 4.4 and
above**

**Easy-to-read measurements with
instant color-coded assessments**

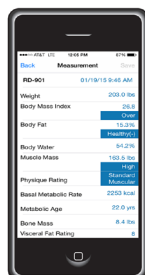
**User recognition - just step on
and the scale will start taking a
measurement**

**11 Full-Body Measurements,
including muscle quality score**

Graph



Measure



Free Tanita Healthy Edge® Mobile App

Automatically upload your measurements to Tanita Healthy Edge® Mobile App.

✓ **iPhone 4S or above**

✓ **Android 4.4 or above**

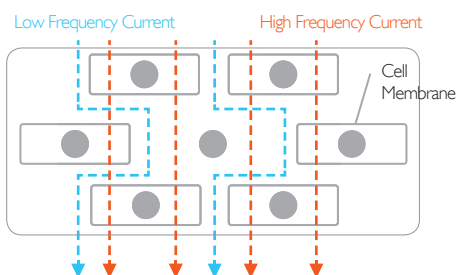
Provides a powerful tool to track your progress with easy-to-read graphs and helpful assessments. Set your own targets and achieve your personal fitness and wellness goals.

RD-953 innerScan® BLUETOOTH BODY COMPOSITION MONITOR

Tanita, the designer, manufacturer & distributor of the world's most accurate, radio wireless body composition scales. Since creating the world's first stand-on body composition monitor in 1992, Tanita Bioelectrical Impedance Analysis (BIA) technology has been used by health and well-being experts around the world.

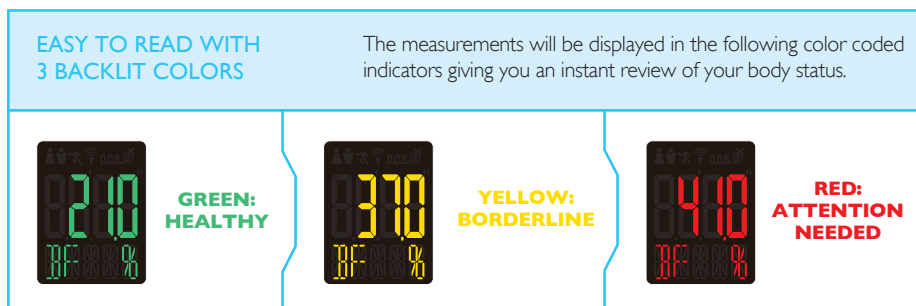
Tanita has produced the highest standard in fitness and wellness assessment. The RD-953 incorporates the very best **FDA Cleared**, medical grade "Multi Frequency", BIA technology, allowing you to have the most accurate body composition accuracy in the comfort of your home.

What is "Multi Frequency"?



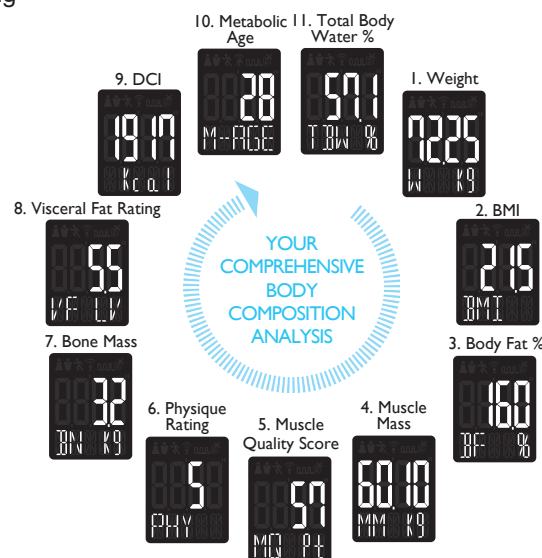
Research has shown that using multiple bio-electrical impedance (BIA) frequencies provides essential data of a person's **intracellular** and **extracellular status**. This advanced technology allows greater accuracy when calculating body composition measurements, including muscle quality score.

YOUR MEASUREMENTS ARE ASSESSED AND SHOWN IN 3 SIMPLE LEVELS

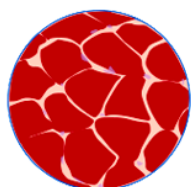
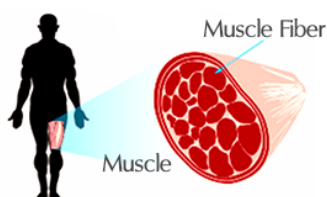


Specifications:

- ✓ Bluetooth 4.0 Low Energy
- ✓ Capacity: 440lb (200 kg)
- ✓ Weight increments:
0-200lb / 0.1lb, 200-440lb / 0.2lb
0-100kg / 0.05kg, 100-200kg / 0.1kg
- ✓ Body Fat Increments: 0.1%
- ✓ Tempered glass platform with transparent electrodes
- ✓ 4 user memory - each with it's own color display
- ✓ Color Coded Indicators
- ✓ Weight only function
- ✓ Guest Mode & Athlete Mode
- ✓ Power Supply: 4 x AA (included)
- ✓ Dimensions: 11.7" x 12.9" x 1.3"
- ✓ Weight: 4.6lb



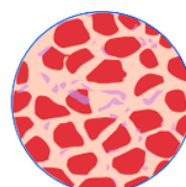
Muscle Quality Score



HIGH

Higher density of muscle fiber with little fat, water and connective tissue, etc.

⇒ **Maintain regular exercise to ensure your Muscle Quality stays within the healthy range.**



LOW

Muscle fiber is thinner and fewer as compared with other substances

⇒ **Increase exercise on a regular basis to improve your Muscle Quality Score**